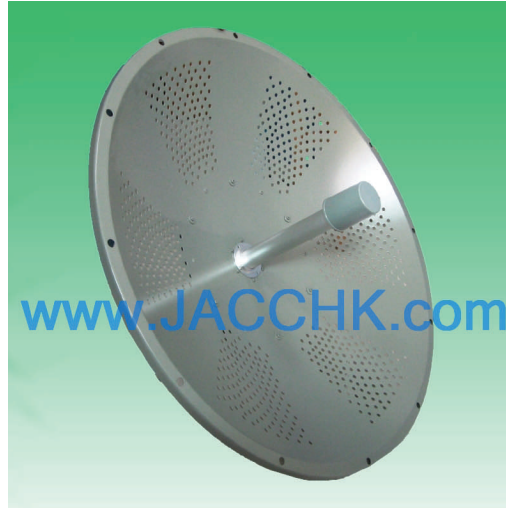


J2400D27-DP MIMO 2400-2500 MHz 2x 27 dBi Dual Polarization Dish Antenna



Antenna Model No.	J2400D27-DP
Frequency Range	2400 - 2500 MHz
Bandwidth	100 MHz
Gain	2x 27 dBi
Horizontal Beamwidth	8°
Vertical Beamwidth	7°
Front-to-Back Ratio	≥ 28 dB
VSWR	≤ 1.5
Nominal Impedance	50 Ohms
Maximum Power	100 Watts
Polarization	Dual Polarization (Vertical & Horizontal)
Connector	2x N Female
Diameter	3 ft / 0.9 m
Weight	23.1 lbs / 10.5 kg
Wind Load	120 mph / 60 m/s
Dish Material	Aluminum
Mast Mount Diameter	2.0" - 3.0" / 50 - 75 mm
Operating Temperature	-22°F to 140°F / -30°C to 60°C

