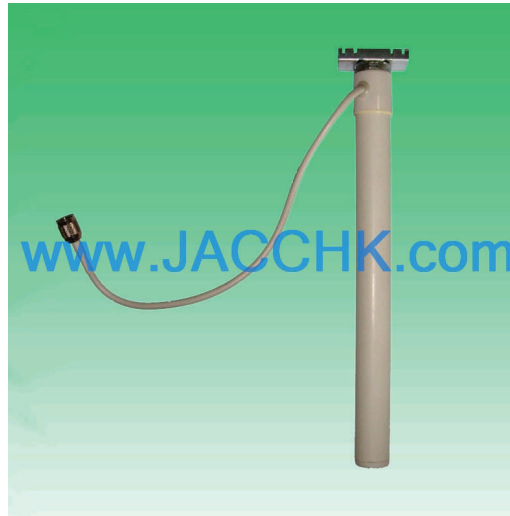


J2400O05-CL 2400-2500 MHz 5 dBi V-POL Ceiling Tile Clip Omni Antenna



Antenna Model No.	J2400O05-CL
Frequency Range	2400 - 2500 MHz
Bandwidth	100 MHz
Gain	5 dBi
Horizontal Beamwidth	360°
Vertical Beamwidth	30°
VSWR	≤ 1.5
Nominal Impedance	50 Ohms
Maximum Power	100 Watts
Polarization	Vertical
Connector	N Female
Length (Height)	11.6" / 295 mm
Radome	ABS
Mast Mount Diameter	Ceiling Tile Clip
Operating Temperature	-22°F to 140°F / -30°C to 60°C

